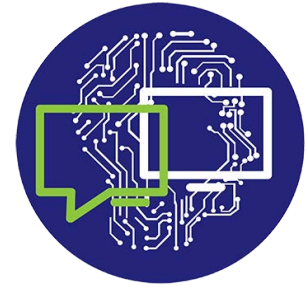


## Case Study



### At-a-Glance

#### The Company:

Advanced mobile service carrier with more than 5 million customers across the U.S.

#### The Challenge:

Rapidly develop social networking solutions for mobile users.

#### The Solution:

Using Agile methodologies, Tim Tech Consults implemented nearshore team for application development and QA.

#### The Benefits:

A rapid solution that provided over 30% cost reduction over previous solutions, and a solution that greatly contributed to \$6 million USD of increased revenue through 2008.

# Social Networking Solution for Wireless Communications Provider, Using Agile Methodologies

## The Client

An advanced mobile service carrier that provides innovative media devices, this client has been recognized and awarded for being one of the first companies to create a variety of social applications for users. With cutting-edge technology, the company has recently partnered up and serves more than 5 million customers across the U.S.

## The Challenge

The client was looking to assemble a team, which working under the Agile Software Development concept, could easily adapt to its processes and work on the creation of social applications that interface its mobile devices with YouTube, MySpace, Facebook, Twitter, and the likes. At the beginning the challenge was getting up to speed with the technology stack required (Java, open source and other emerging technologies).

## The Solution by Tim Tech Consults

After assessing the client's background, its needs, and plausible outcomes, Tim Tech Consults managed to create a self-organized team with the right blend of skills and seniority which started developing the solution from one of Tim Tech Consults's nearshore GDC's, providing the cost benefits inherent to a global delivery model, while using Agile methodologies which are rarely used in a remote-team configuration, due to the high degree of collaboration and the large number of iterations needed in an Agile engagement. This quickly evolved into a managed service, by which the nearshore team took ownership of some projects. Tim Tech Consults began developing applications and is currently doing QA to cover end-to-end, automation, performance, stress, system, fail over, security and other types of testing.

The initial solution required:

- 30,000 man-hours
- Java Multi-Threading/Networking/Socket Programming, REST Web Services, WAP/WML/XHTML, Async Web, SOA and ESB, Java JMX, JVM Tuning, Image/Video Manipulation, J2ME, Web 2.0, Profiling and testing open source tools
- Product for Market type application (MySpace, YouTube, HSE, Connect)
- Ramping up an engineering team
- Agile, feature-driven development, and continuous integration methodologies
- A strong focus on productivity and customer satisfaction

## The Benefits

- The solution greatly contributed to a \$6 million of increased revenue through 2008
- Applications developed by Tim Tech Consults were included in the launch of a newly-released "next-generation" cellular device
- A 30%+ cost reduction in its product testing execution and product development
- Guarantee to meet time-to-market deadlines, due to capacity created through Tim Tech Consults for its product testing and development
- More flexibility in its resource allocation plan through the Center of Excellence created in Tim Tech Consults GDC in Baja Users enjoy applications with richer client functionality from their mobile devices
- Integration of disparate data sources (i.e. rss feeds)
- Easy-to-use interface

## ABOUT TIM TECH CONSULTS

Founded in 2010, Tim Tech Consults is an African leading provider of process-driven IT solutions with 10 years of Expertise in 3 Offices in East Africa with 15 Global Delivery Centers on the Global, Tim Tech Consults helps improve time-to-business-solution, lower costs of existing applications, deliver better engineered and tested applications, and produce predictable outcomes for top-tier corporations in over 5 countries. Through on-site, on-shore and its trademarked Global Nearshore service delivery models, Tim Tech Consults teams with CIOs to constantly increase the business value of IT. Tim Tech Consults is the creator and a leader of the nearshore industry.

All Rights Reserved. Tim Tech Consultants 2010. Tim Tech Consults, the TTC logo, Near Shore and other TTC products and services mentioned herein are registered trademarks of Tim Tech Consultants Uganda Limited, Canada and several other countries.